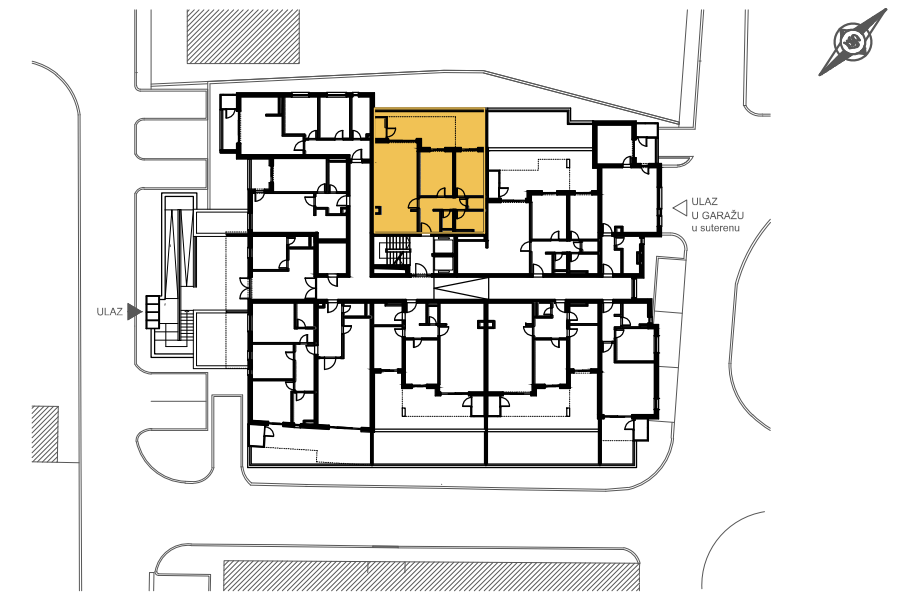
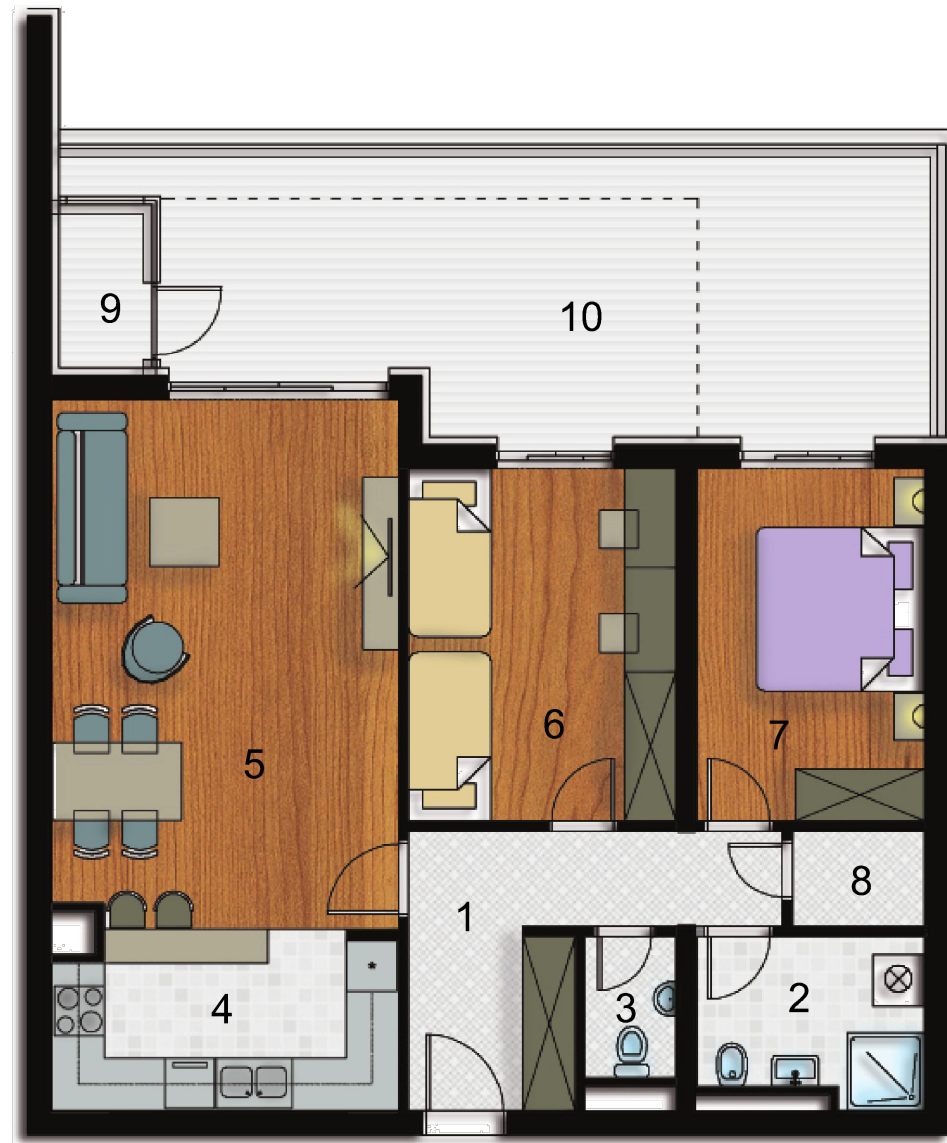


# STAMBENI OBJEKAT "DVA CEDRA", Mostar

# PRIZEMLJE



## DVOSOBAN STAN - 81,59 m<sup>2</sup> STAN br.4

1. HOL	8,80 m <sup>2</sup>
2. KUPATILO	4,85 m <sup>2</sup>
3. WC	1,70 m <sup>2</sup>
4. KUHINJA	8,10 m <sup>2</sup>
5. DNEVNI BORAVAK I TRPEZARIJA	24,40 m <sup>2</sup>
6. SOBA 1	10,75 m <sup>2</sup>
7. SOBA 2	12,65 m <sup>2</sup>
8. OSTAVA	1,65 m <sup>2</sup>
9. OSTAVA na terasi	1,85 m <sup>2</sup>

ZATVOREN PROSTOR - UKUPNO	74,75 m <sup>2</sup>
10. TERASA	6,84 m <sup>2</sup>

