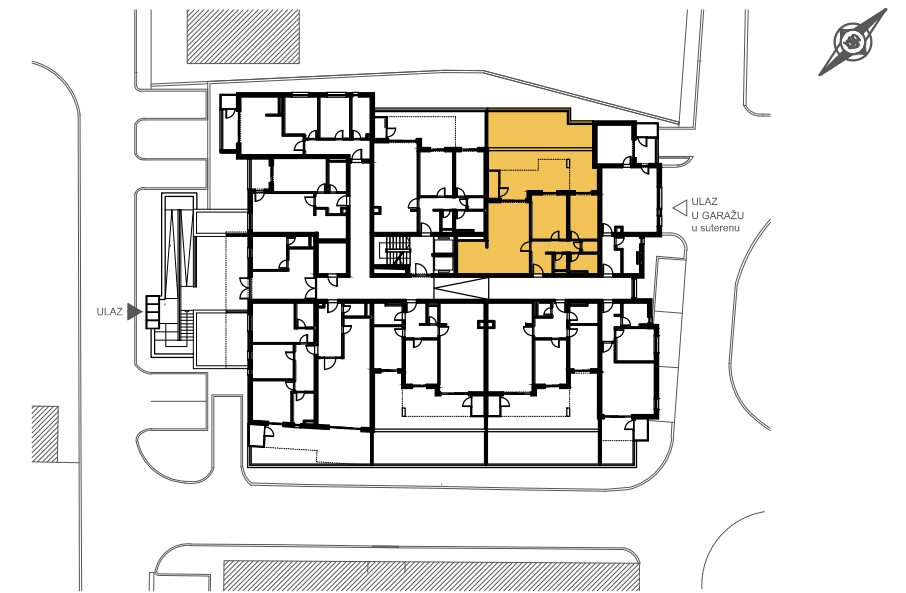
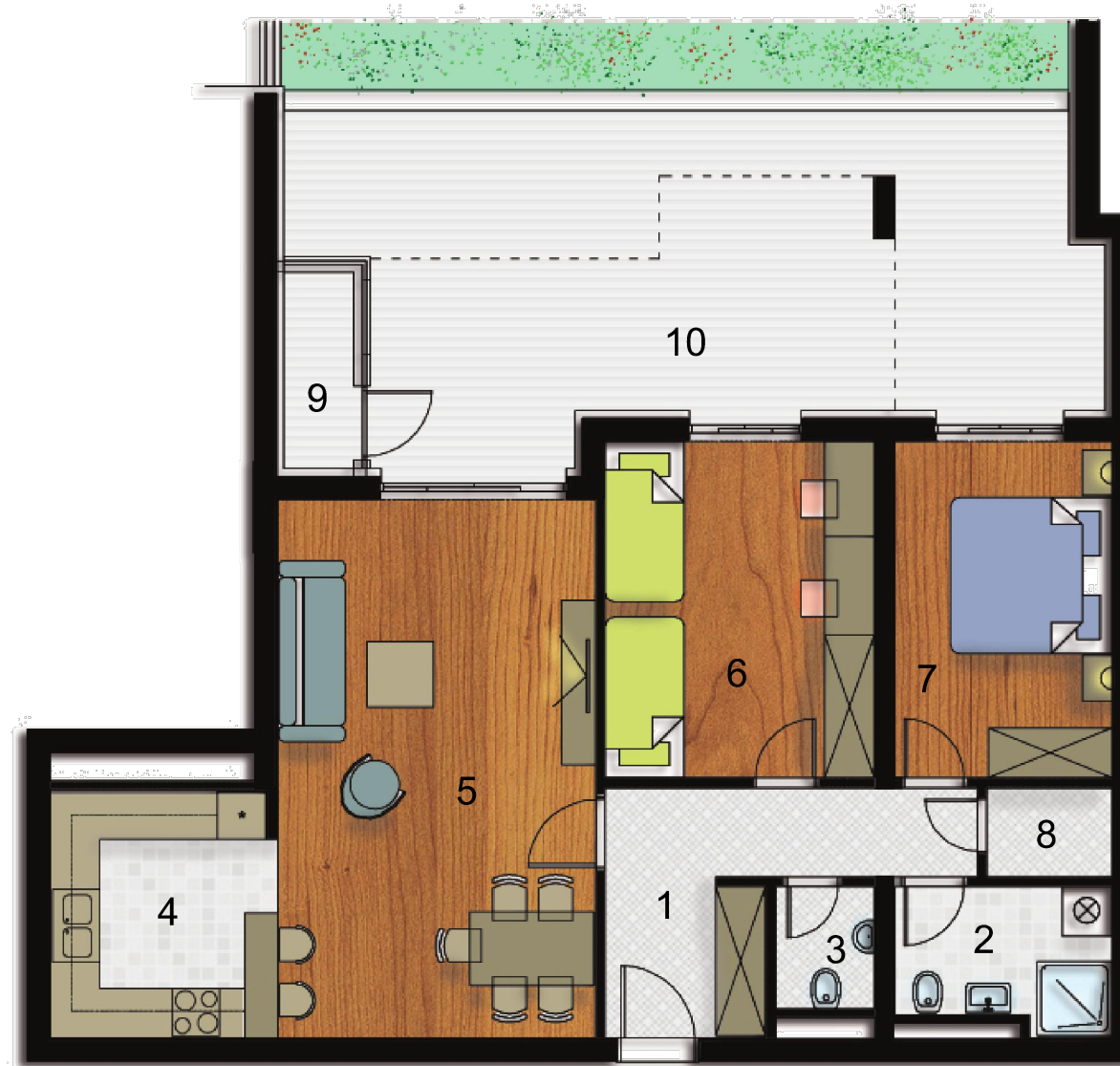


STAMBENI OBJEKAT "DVA CEDRA", Mostar

PRIZEMLJE



DVOSOBAN STAN - 84,74 m² STAN br.6

1. HOL	8,55 m ²
2. KUPATILO	4,40 m ²
3. WC	1,75 m ²
4. KUHINJA	8,30 m ²
5. DNEVNI BORAVAK I TRPEZARIJA	25,15 m ²
6. SOBA 1	13,30 m ²
7. SOBA 2	10,75 m ²
8. OSTAVA	1,60 m ²
9. OSTAVA na terasi	2,10 m ²

ZATVOREN PROSTOR - UKUPNO	75,90 m ²
10. TERASA	8,84 m ²

