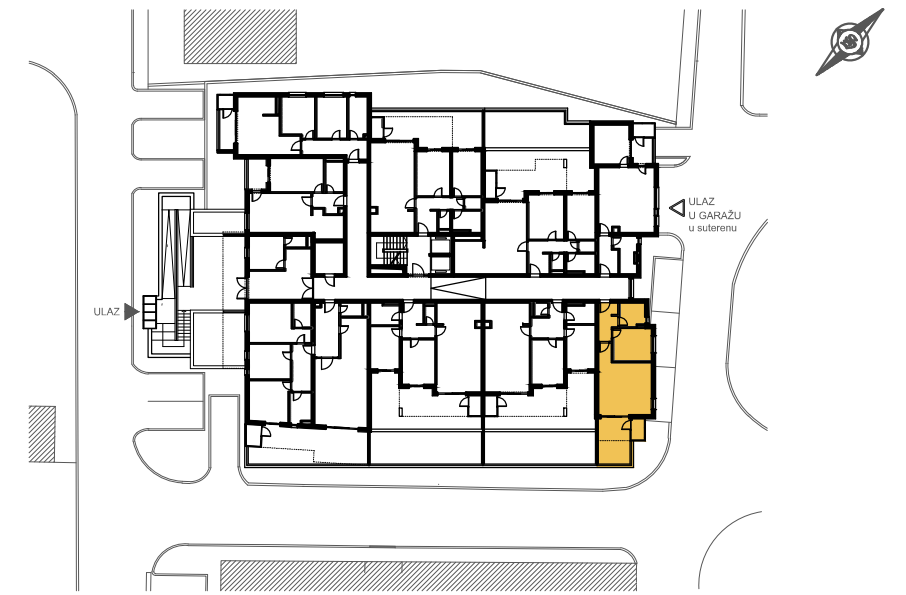


# STAMBENI OBJEKAT "DVA CEDRA", Mostar

## PRIZEMLJE



### JEDNOSOBAN STAN - 51,23 m<sup>2</sup> STAN br.9

1. HOL	5,40 m <sup>2</sup>
2. KUPATILO	5,15 m <sup>2</sup>
3. KUHINJA	5,45 m <sup>2</sup>
4. DNEVNI BORAVAK I TRPEZARIJA	19,75 m <sup>2</sup>
5. SOBA 1	10,55 m <sup>2</sup>
6. OSTAVA na terasi	1,90 m <sup>2</sup>

ZATVOREN PROSTOR - UKUPNO	48,20 m <sup>2</sup>
7. TERASA	3,03 m <sup>2</sup>

